

Permaliner for Tanks Information and Installation Guide

Permathene Tank Liners are designed to be placed inside existing tanks as follows: wooden tanks designed for liners, concrete and galvanised steel tanks which are prone to leaking and elimination of contamination from structural elements.

Permaliner tank liners are made for water and chemicals, see chemical resistance tables for compatibility.

Permaliner is 100% toxic free and suitable for potable water containment (FDA approval 177.1210).

We custom manufacture liners for any size rectangular or circular tank.

- Before ordering a tank liner from us please obtain the following: Rectangular tanks: internal Height, Width, Length. Circular tanks: internal Height, Diameter.

Tankliner Installation

Preparation

Ensure structure surface is clean, dry and free from rust and scale. Metal surfaces should be coated with suitable rustproofing paint and allowed to dry thoroughly. Ask about our Syntex nonwoven geotextile to protect the base from any sharp objects.

● Caution

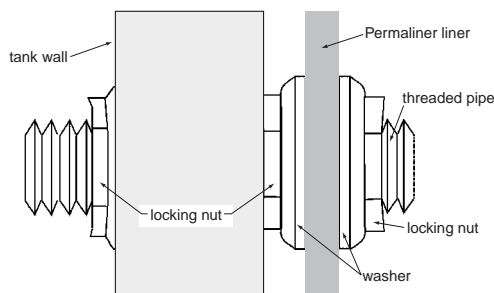
Do not allow liner to be trampled, dragged, etc.
Avoid unnecessary handling and wrinkling
Do not wear shoes while walking on liner

Liner Placement

Open the liner to its full size and evenly apportion liner in the tank, being careful to avoid snags.

Outlets and Overflows

When liner is in correct position determine exact



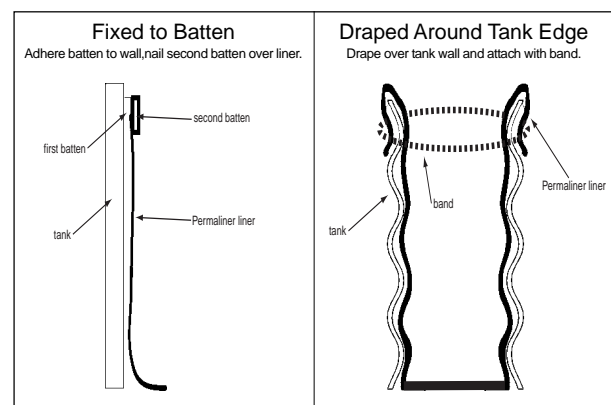
location of the outlet and overflow and cut a slit the size of pipe being used in exact orifice location.

Insert a threaded pipe nipple with at least 1½" (38mm) of thread for a ½" (12mm) pipe or greater for larger diameter pipes. Put rubber washer and locking nut over threaded nipple on both sides of lining material.

Insert threaded pipe into tank orifice and secure to tank structure by means of another locking nut. **Do not allow pipe or washers to turn when tightening nuts** as this can damage liner.

Completion

When the outlet, overflow, and liner are installed, partly fill to check the connections are watertight. Any leaks will require correction before filling continues. Carefully replace tank lid. Left undisturbed, the liner should require no further attention.



Liner Attachment

Evenly apportion excess material and attach liner to tank wall around the top edge by one of the methods shown below. Spread liner to all bottom edges. Do not allow any voids, as the liner must be fully supported by the tank structure. Any air pockets behind the liner can cause the material to stretch beyond its limits, resulting in damage.

The information presented herein, while not guaranteed, is to the best of our knowledge true and accurate. Except when agreed to in working conditions of use, no warranty expressed or implied is made regarding the performance of any product, since the manner of use and handling is beyond our control.

Permaliner is a registered or unregistered trademark of Permathene.

Permathene Civil & Environmental

PO Box 71 015, Auckland 7; New Zealand
404 Rosebank Rd, Avondale
www.permathene.com
Tel 0-9-968 8888 Fax 0-9-968 8890